

Trauma & Grief Institute (tgi) - Ottawa

Mental Health Service In Ottawa



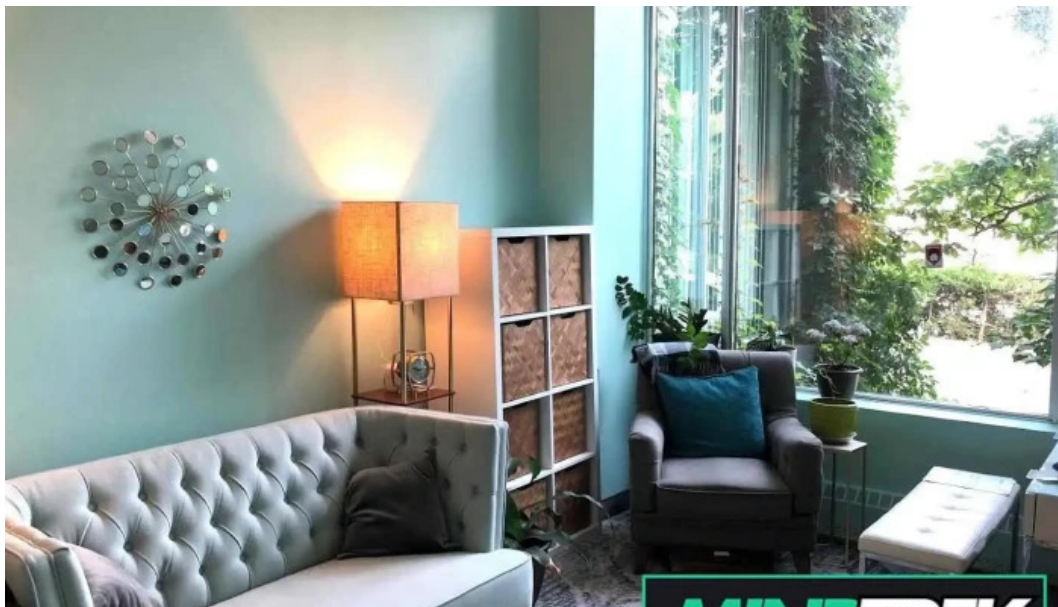
I'm not a robot



RECAPTCHA

Published on: 02/05/25	Hits: 57
Comments: 0	See comments
Votes: 31	Score: 4.3

https://www.mindtrek.ca/mental-health-service/ottawa/trauma-grief-institute-tgi-ottawa_260951.php



Mental Health Service In Ottawa

Trauma & Grief Institute (tgi) - Ottawa

Mental Health Service: Trauma & Grief Institute (TGI) in Ottawa, Ontario

The **Trauma & Grief Institute (TGI)** located in Ottawa, Ontario, offers invaluable support for individuals dealing with emotional and psychological challenges stemming from trauma and grief. This institute is dedicated to creating a compassionate environment where healing can take place.

Planning Your Visit

When planning your visit to TGI, it is essential to consider the variety of **service options** available. The institute provides a range of therapy programs tailored to meet individual needs. Appointments are recommended to ensure that you receive the best possible care and attention during your visit.

Accessibility Features

TGI is committed to providing an inclusive experience for all visitors. The **wheelchair-accessible car park** ensures that individuals with mobility challenges can easily access the facility. In addition, the institute has made significant efforts to enhance overall **accessibility**, making it easier for everyone to seek help.

Amenities for Comfort

To ensure a comfortable experience, the Trauma & Grief Institute offers several **amenities**. The facility includes clean **toilet** facilities, providing convenience for those who may need assistance during their visit. Furthermore, there is a **free parking lot** available for all guests, alleviating any concerns related to parking fees.

Language Assistance

For those who may require additional support, TGI offers **language assistance** to help facilitate communication. Ensuring that every visitor feels understood and comfortable is a priority, promoting a more effective therapeutic environment.

Conclusion

If you or a loved one are seeking support for trauma and grief, consider reaching out to the Trauma & Grief Institute in Ottawa. With its well-planned services, accessibility features, and commitment to patient comfort, TGI stands out as a premier mental health service provider in the community.

You can reach us at

2039 Robertson Rd Suite 101, K2H 8R2 Ottawa, Ontario - Canada (CA)

Our service hours are:

Day Hours

Monday
8?AM–8?PM
Tuesday
8?AM–8?PM
Wednesday
8?AM–8?PM
Thursday
8?AM–8?PM
Friday
8?AM–8?PM
Saturday
8?AM–8?PM
Sunday
8?AM–8?PM

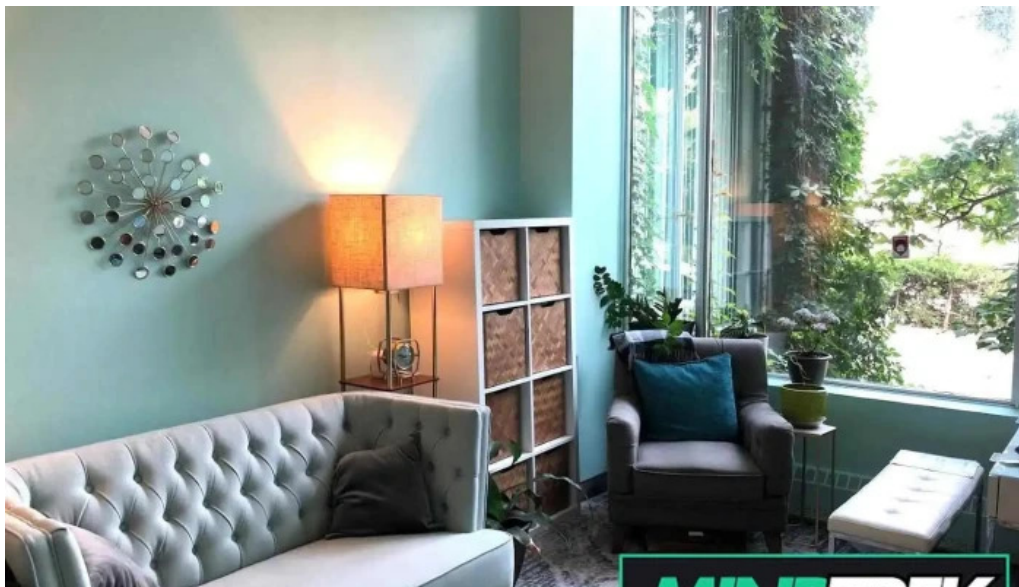
The website is Trauma & Grief Institute (TGI)

If you require to update any data that you feel is incorrect concerning this portal, we urge you to deliver a message so that we will correct it quickly.
Thanks beforehand thanks for your cooperation.

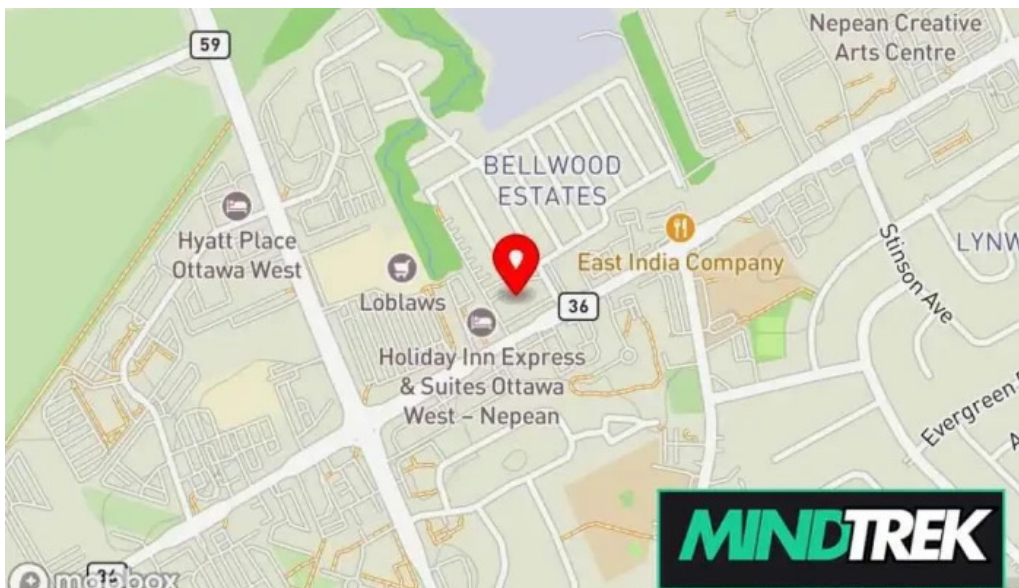
Images



Trauma grief institute tgi street view 360deg



Trauma grief institute tgi ottawa



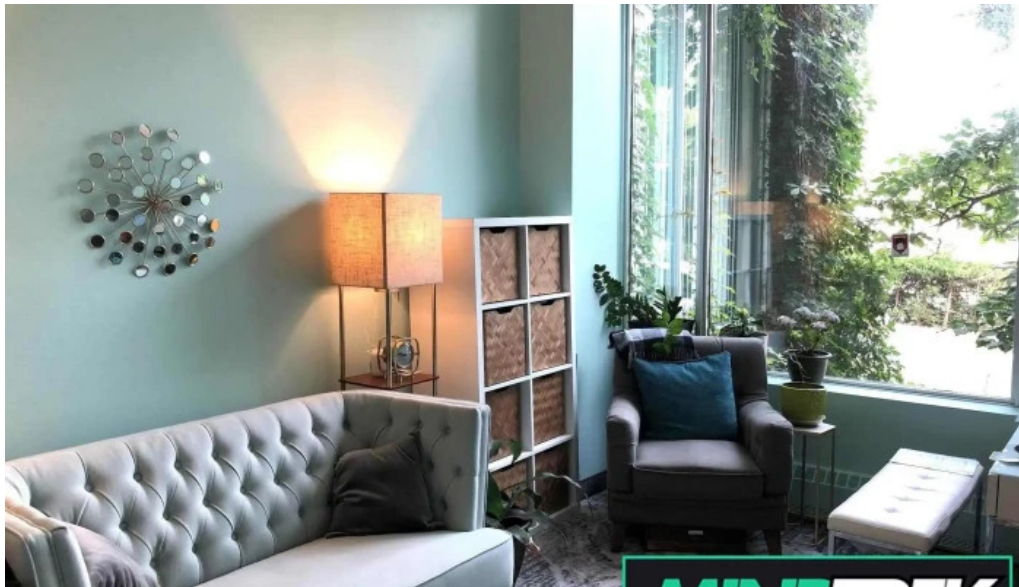
Trauma grief institute tgi map



Trauma & Grief

Institute

Trauma grief institute tgi by owner



Trauma grief institute tgi all

Tags

Parking, Language assistance, Wheelchair-accessible car park, Planning, Appointments recommended, Toilet, Amenities, Service options, Accessibility, Free parking lot

Related content

5.0 * *It's All About You Therapy - Teen, Family, Grief, Trauma & Marriage Counselling - Whitby*

5.0 * *Crew Psychotherapy and Trauma Services - Whitby*

4.7 * *Trauma Centre - Sharon*

5.0 *	<i>Near North Therapy - Trauma Therapy Orillia - Orillia</i>
5.0 *	<i>Kealy Counselling Sudbury Cbt, Dbt & Trauma Therapy - Greater Sudbury</i>
5.0 *	<i>Mind Shift Therapy and Neurofeedback: Maternal Mental Health and First Responders, Trauma, Emdr - Barrie</i>
1.0 *	<i>Mariposa Speech and Language Clinic - Severn</i>
3.9 *	<i>Journeys Mental Health Services - Aurora</i>
5.0 *	<i>Serebro Health - Barrie</i>
5.0 *	<i>InnerSight Psychotherapy - Barrie</i>

Categories

academic department
acupuncture clinic
acupuncturist
addiction treatment center
advertising agency
art studio
association / organization
astrologer
bankruptcy service
child health care centre
child psychologist
chiropractor
citizen information bureau
community center
community health centre
consultant
corporate office
counselor
crisis center
dentist
doctor
education center
emdr psychotherapist
equestrian facility
family counselor

family practice physician
family service center
fitness center
health counselor
health spa
holistic medicine practitioner
home health care service
hotel
hypnotherapy service
laser hair removal service
life coach
lymph drainage therapist
marriage or relationship counselor
massage spa
massage therapist
medical center
medical clinic
medical spa
mental health clinic
mental health service
naturopathic practitioner
nutritionist
occupational health service
occupational therapist
orthopedic clinic
orthotics & prosthetics service
pediatric clinic
personal trainer
pharmacy
physical therapist
physical therapy clinic
psychiatrist
psychologist
psychologists
psychotherapist
rehabilitation center
skin care clinic
sleep clinic
social services organization
social worker
spa
specialized clinic

speech pathologist
sports medicine clinic
student career counseling office
support group
wellness center
yoga studio