

New Path Youth and Family Services - Orillia

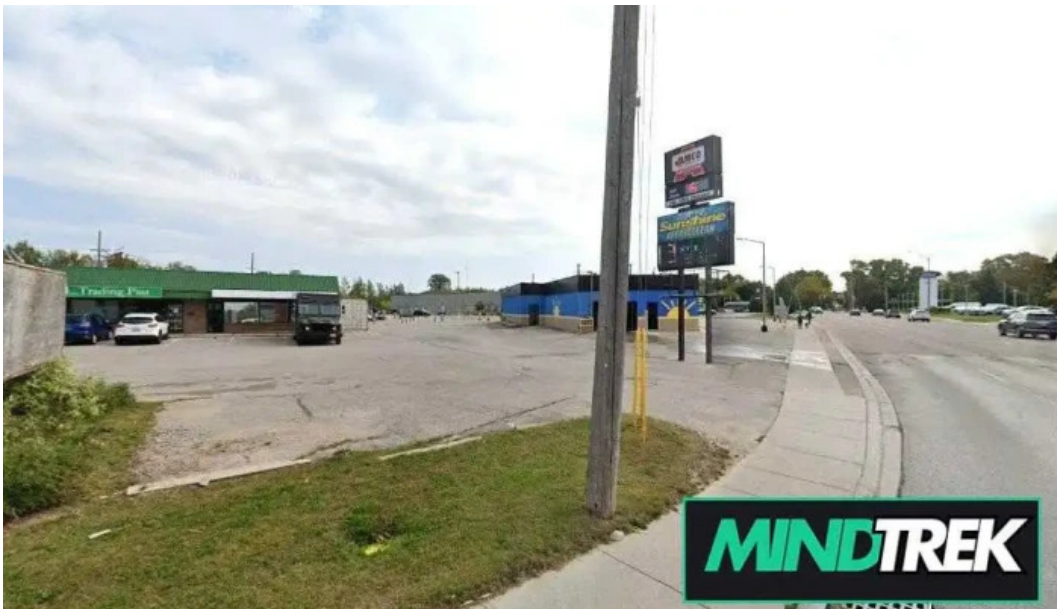
orillia

I'm not a robot  RECAPTCHA

Published on: 09/04/25	Hits: 24
Comments: 0	See comments
Votes: 3	Score: 3

https://www.mindtrek.ca/mental-health-service/orillia/new-path-youth-and-family-services-orillia_1941

78.php



orillia

New Path Youth and Family Services - Orillia

Mental Health Service: New Path Youth and Family Services in Orillia, Ontario

New Path Youth and Family Services is a vital mental health service located in Orillia, Ontario, dedicated to providing essential support for children and families. With a strong focus on accessibility and patient care, this facility stands out in the community.

Wheelchair-Accessible Features

Accessibility is a crucial aspect of New Path's commitment to serving all individuals. The center offers a **wheelchair-accessible car park**, ensuring that those with mobility challenges can easily access the facility. Upon arrival, visitors will find a **wheelchair-accessible entrance**, allowing for a seamless transition into a welcoming environment. Furthermore, the amenities at New Path include a **toilet** that meets accessibility standards. This attention to detail ensures that everyone can feel comfortable and supported during their visit.

Positive Experiences and Commitment to Care

The testimonies from clients highlight the exceptional level of care provided by the staff at New Path. One client expressed gratitude, stating, "New Path was very accommodating and the staff is incredibly kind and professional. They helped in ways that currently the health system in Ontario lacks." This sentiment reflects the organization's dedication to mental health support and therapy for children and families. Many recommend New Path for its compassionate approach and effective services.

Challenges and Areas for Improvement

While many experiences at New Path have been overwhelmingly positive, there are occasional challenges. One individual noted disappointment with the treatment received from a staff member, sharing, "Do not like the way we were treated by the second person we spoke to. Very disappointing and a waste of our time. Won't be back." Such feedback highlights the importance of continual improvement within the service to ensure that all clients feel valued and supported.

Conclusion

In conclusion, New Path Youth and Family Services in Orillia, Ontario, offers essential mental health support with a strong emphasis on **accessibility** and effective care. With features like a **wheelchair-accessible car park** and **toilets**, the facility strives to accommodate all visitors. Despite some mixed feedback, the overall commitment to kindness and professionalism reinforces its reputation as a valuable resource for mental health support in the community.

The location of our business is in

169 Front St S, L3V 4S8 Orillia, Ontario - Canada (CA)

The contact phone of the mentioned **Mental health service** is +1705-325-6161
And if you want to send a WhatsApp, you can do so at +1705-325-6161

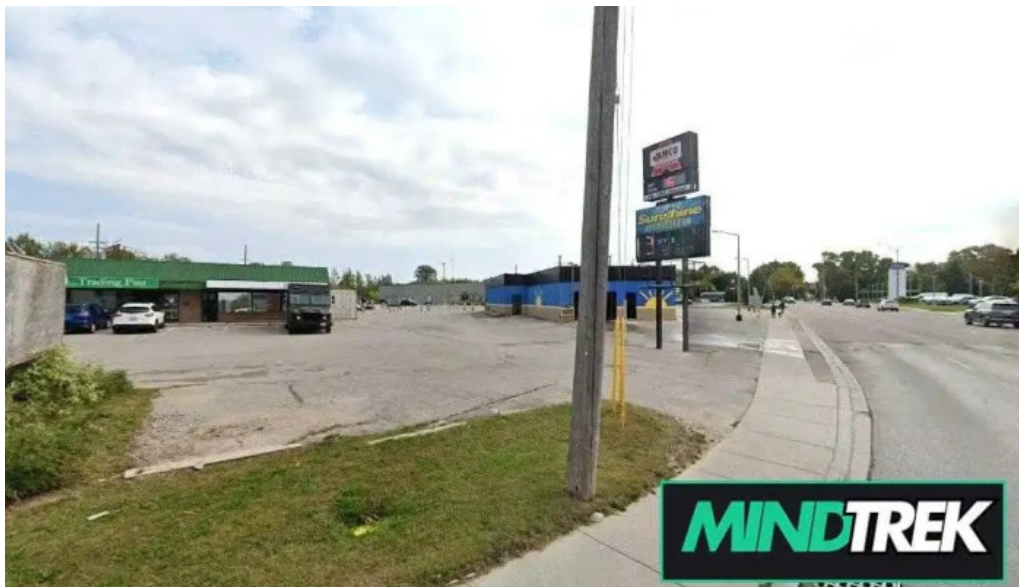
We are open during the following hours:

Day Hours
Monday
8:30?AM–4:30?PM
Tuesday
8:30?AM–4:30?PM
Wednesday
8:30?AM–4:30?PM
Thursday
8:30?AM–4:30?PM
Friday
Closed
Saturday
Closed
Sunday
8:30?AM–4:30?PM

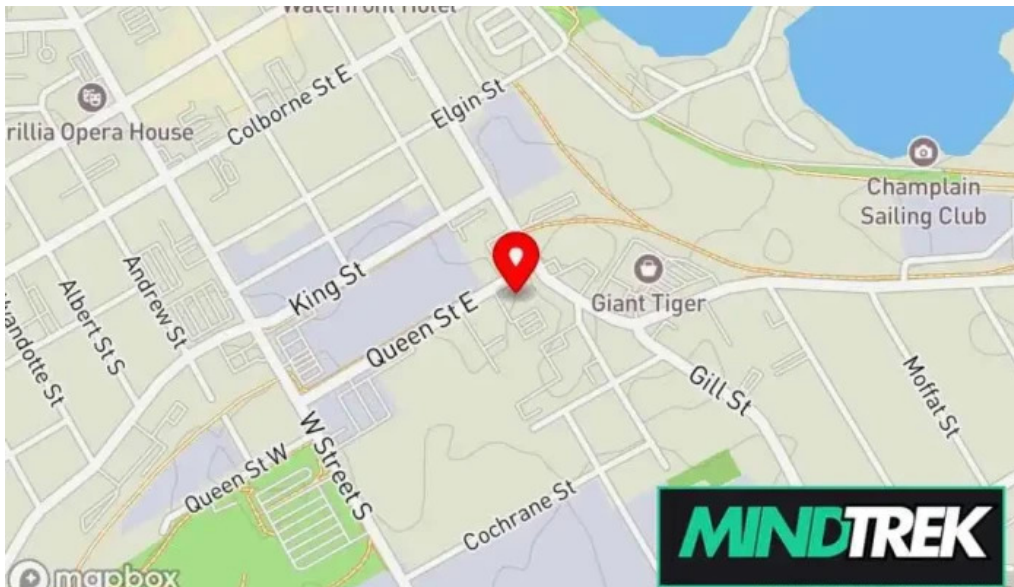
The website is [New Path Youth and Family Services](#)

If you require to modify any detail that you feel is not precise regarding this page, we urge you to send a message and we will fix it as soon as possible. Thank you in advance thanks.

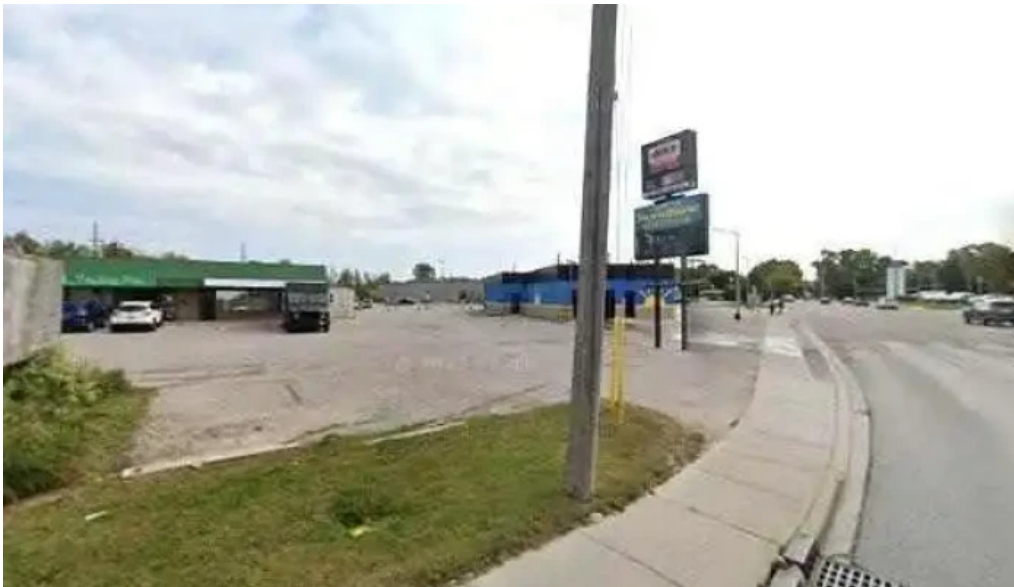
Images



New path youth and family services orillia



New path youth and family services map



New path youth and family services all

Tags

Accessibility, Wheelchair-accessible entrance, Wheelchair-accessible toilet, Wheelchair-accessible car park, Amenities, Toilet

Related content

2.8 * *Jeff Packer Msw & Associates Inc. - Oshawa*

5.0 * *Acquah Counseling and Consulting Services - Ajax*

3.9 * *Integrate Health Services - Ajax*

4.3 * *Embrace Well Psychological Services - Ajax*

3.8 *	<i>Mills Gosse Psychology (Ajax Pickering) - Ajax</i>
3.7 *	<i>MacDonald Psychotherapy - Ajax</i>
5.0 *	<i>Ask Donna Marie Counseling Services - Ajax</i>
4.5 *	<i>Safe Spaces Therapy - Ajax</i>
4.7 *	<i>Cbm Psychological & Counselling Services - Pickering</i>
5.0 *	<i>Winning With Wisdom Counsel For Life - Pickering</i>

Categories

child health care centre
child psychologist
chiropractor
community center
community health centre
consultant
counselor
doctor
family counselor
family service center
health counselor
health spa
life coach
marriage or relationship counselor
massage therapist
mental health clinic
mental health service
physical therapist
physical therapy clinic
psychiatrist
psychologist
psychologists
psychotherapist
social worker
support group