


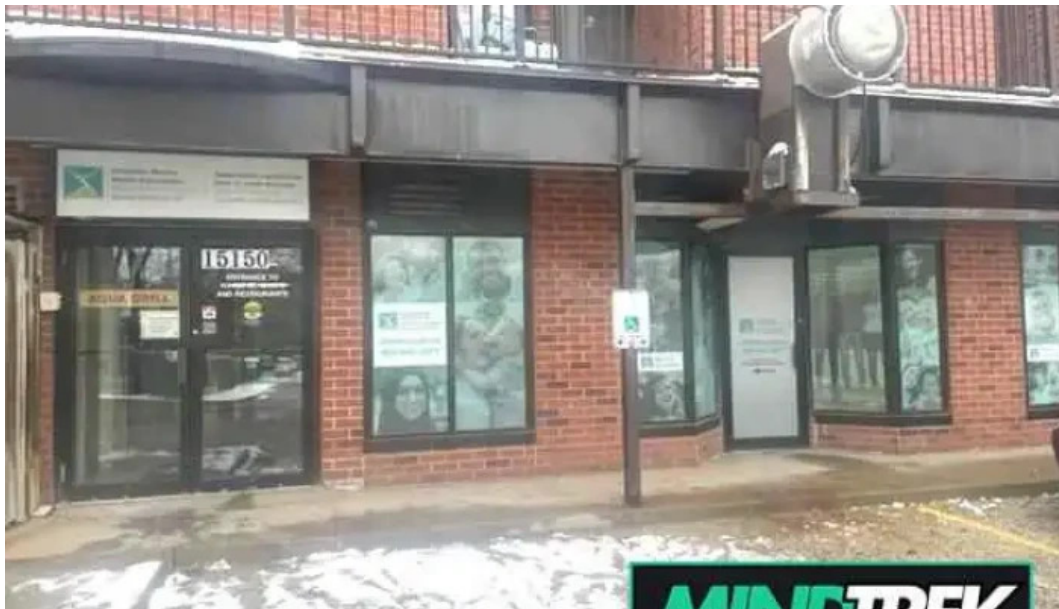
Canadian Mental Health Association | York Region & South Simcoe: Aurora Branch - Aurora

aurora

 I'm not a robot 

Published on: 20/04/25	Hits: 130
Comments: 0	See comments
Votes: 13	Score: 3

https://www.mindtrek.ca/mental-health-clinic/aurora/canadian-mental-health-association-york-region-south-simcoe-aurora-branch-aurora_214504.php



aurora

Canadian Mental Health Association | York Region & South Simcoe: Aurora Branch - Aurora

Canadian Mental Health Association | York Region & South Simcoe: Aurora Branch

The ****Canadian Mental Health Association (CMHA)**** in Aurora, Ontario, serves as a vital resource for individuals seeking mental health support in the York Region and South Simcoe area. This facility aims to provide various

services while ensuring **accessibility** for all clients.

Accessibility Features

One notable aspect of the CMHA Aurora Branch is its commitment to being inclusive. The center features a **wheelchair-accessible entrance** and a dedicated **wheelchair-accessible car park**, allowing individuals with mobility challenges to access services comfortably. Furthermore, it has a **wheelchair-accessible toilet**, ensuring that all visitors can utilize essential amenities without barriers.

Service Options and On-site Services

CMHA offers a range of **on-site services** designed to cater to diverse needs. Unfortunately, some clients have reported negative experiences regarding the effectiveness of these programs. While many find the staff friendly and committed, others express frustration over **unprofessional** service and lack of support, especially within housing programs. For example, one client highlighted their disappointment with being placed in an unsuitable living situation under false pretenses. Such incidents underline the necessity for continual improvement in service delivery and client support.

A Safe Space for Everyone

The CMHA Aurora Branch strives to be a **transgender safe space** and is recognized as **LGBTQ+ friendly**, fostering an environment where all individuals feel welcome and supported. This commitment is crucial in providing comprehensive care to those from diverse backgrounds and life experiences.

Community Feedback and Experiences

Feedback about the CMHA Aurora Branch varies significantly among clients. While some appreciate the help they've received, others share stories of feeling unsupported and dismissed. Comments such as "They make people WORSE not better" and "Nothing but bad experiences with the housing program" illustrate the complexity of mental health services and the importance of listening to client concerns. Despite the criticism, some former volunteers note the organization's generosity and dedication to helping others. This duality showcases the varied experiences individuals have at CMHA.

Final Thoughts

The Canadian Mental Health Association | York Region & South Simcoe: Aurora Branch stands as an essential institution for mental health support in the community. While there are areas needing improvement, particularly concerning client feedback and service efficacy, its commitment to **accessibility**, inclusivity, and community support remains vital. Continuous efforts to enhance client experiences will be key in fulfilling its promise to serve those in need effectively.

The address of our establishment is

15150 Yonge St Suite 201, L4G 1M2 Aurora, Ontario - Canada (CA)

The contact phone of this **Mental health clinic** is +1905-841-3977

And if you want to send a WhatsApp, you can do so at +1905-841-3977

You can visit us at the following hours:

Day Hours
Monday
8:30?AM–4:30?PM
Tuesday
8:30?AM–4:30?PM
Wednesday
Closed
Thursday
Closed
Friday
8:30?AM–4:30?PM
Saturday
8:30?AM–4:30?PM
Sunday
8:30?AM–4:30?PM

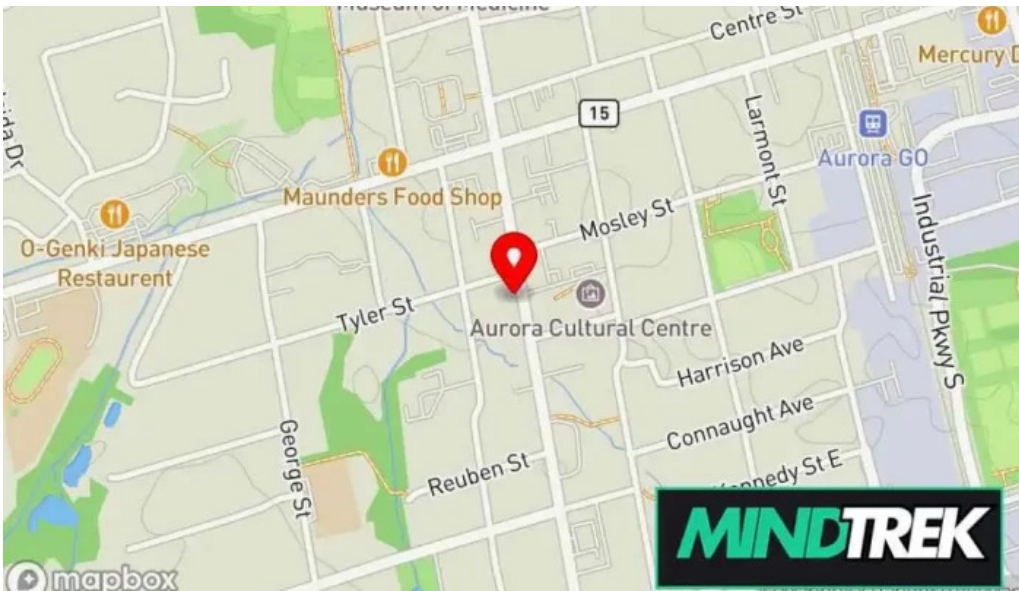
The website is Canadian Mental Health Association | York Region & South Simcoe: Aurora Branch

In case you want to change any data that you believe is incorrect about this page, please send us a message so that we will adjust it at the earliest convenience. With anticipation thanks.

Images



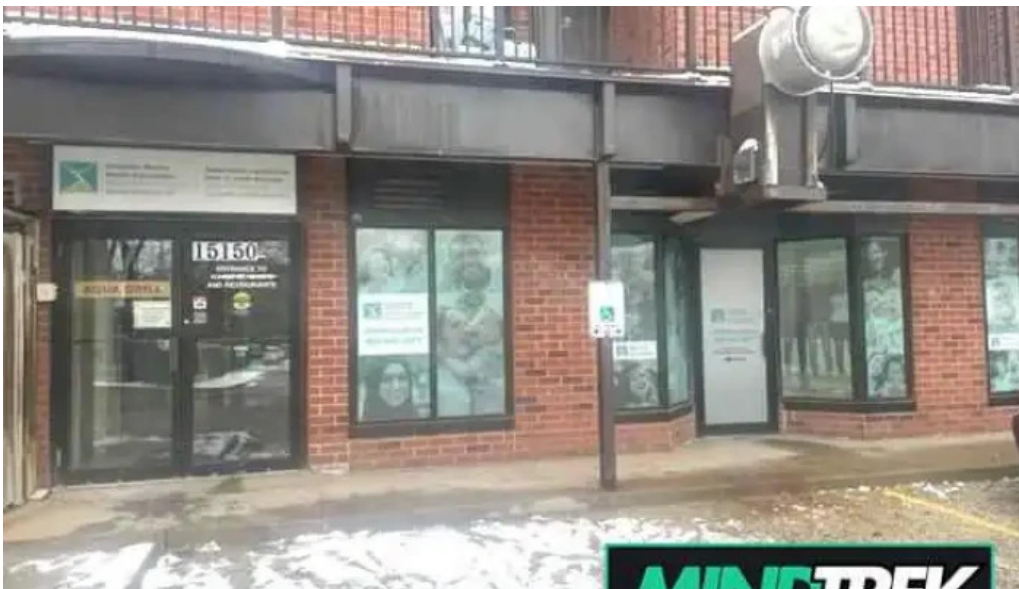
Canadian mental health association york region south simcoe aurora branch street view 360deg



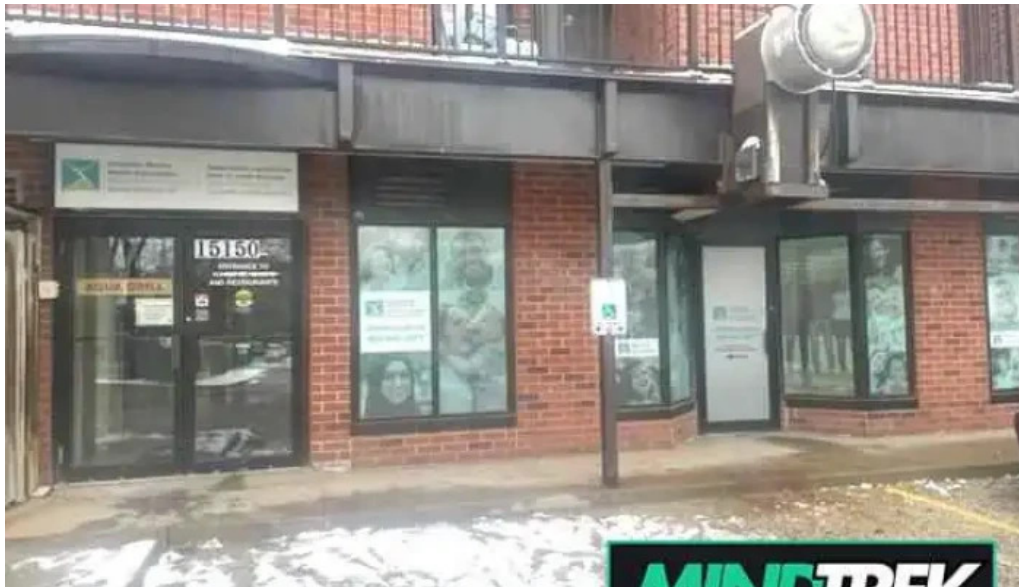
Canadian mental health association york region south simcoe aurora branch map



Canadian mental health association York region South Simcoe Aurora branch by owner



Canadian mental health association York region South Simcoe Aurora branch Aurora



Canadian mental health association york region south simcoe aurora branch all

Tags

Wheelchair-accessible toilet, Toilet, Accessibility, Wheelchair-accessible car park, On-site services, Wheelchair-accessible entrance, Amenities, Transgender safe space, LGBTQ+ friendly, Crowd, Service options

Related content

3.5 * *Canadian Mental Health Association | York Region & South Simcoe: Alliston Branch - Alliston*

3.1 * *Canadian Mental Health Association - Sault Ste. Marie*

5.0 * *South Simcoe Physiotherapy - New Tecumseth*

5.0 * *South Simcoe One Roof - Alliston*

5.0 * *Simcoe County Addiction & Mental Health Service - Alliston*

4.2 * *Simcoe County Psychotherapy - Alliston*

5.0 * *Field Trip Health | Sault Ste. Marie | Ketamine Therapy - Sault Ste. Marie*

4.0 * *Mental Health Ctr - Alliston*

4.8 * *Insightful Journey Inc. - Oshawa*

4.3 * *The Insight Clinic - Whitby*

Categories

acupuncture clinic
acupuncturist
addiction treatment center
art studio
bankruptcy service
child health care centre
child psychologist
chiropractor
community center
community health centre
consultant
corporate office
counselor
dentist
doctor
education center
emdr psychotherapist
equestrian facility
family counselor
family service center
fitness center
health counselor
health spa
holistic medicine practitioner
home health care service
hotel
laser hair removal service
life coach
lymph drainage therapist
marriage or relationship counselor
massage spa
massage therapist
medical center
medical clinic
medical spa
mental health clinic
mental health service
naturopathic practitioner
nutritionist
occupational health service

orthopedic clinic
orthotics & prosthetics service
personal trainer
pharmacy
physical therapist
physical therapy clinic
psychiatrist
psychologist
psychologists
psychotherapist
skin care clinic
sleep clinic
social services organization
social worker
spa
speech pathologist
sports medicine clinic
student career counseling office
support group
wellness center
yoga studio