

Simcoe County Addiction & Mental Health Service - Alliston

alliston

I'm not a robot  RECAPTCHA

Published on: 08/04/25	Hits: 10
Comments: 0	See comments
Votes: 1	Score: 5

https://www.mindtrek.ca/mental-health-clinic/alliston/simcoe-county-addiction-mental-health-service-alliston_194123.php



alliston

Simcoe County Addiction & Mental Health Service - Alliston

Mental Health Clinic in Simcoe County: Addiction & Mental Health Services

Located in Alliston, Ontario, the **Mental Health Clinic Simcoe County** offers essential services for individuals grappling with addiction and mental health challenges. The clinic is dedicated to providing a supportive environment where clients can seek help and improve their well-being.

Accessibility Features

The clinic prioritizes accessibility to ensure all individuals, regardless of physical mobility, can access its services. One notable feature is the **wheelchair-accessible entrance**, making it easy for clients to enter the facility without barriers.

Facilities for Everyone

In addition to the entrance, the clinic boasts a **wheelchair-accessible toilet**. This amenity is crucial for clients who require additional assistance, ensuring comfort during their visits. Furthermore, the clinic provides a **wheelchair-accessible car park**, allowing individuals with mobility issues to park conveniently near the entrance.

Amenities Enhancing Comfort

The amenities at the Mental Health Clinic are designed to create a welcoming atmosphere. These features not only make visiting the clinic easier but also contribute positively to the overall experience of clients seeking support for their mental health and addiction issues.

Conclusion

For those in need of mental health and addiction services in Alliston, the Mental Health Clinic in Simcoe County stands out as an accessible and supportive option. With its focus on **accessibility** and client comfort, it aims to provide a comprehensive approach to mental health care.

The business is situated at

35 Victoria St E, L9R 1T3 Alliston, Ontario - Canada (CA)

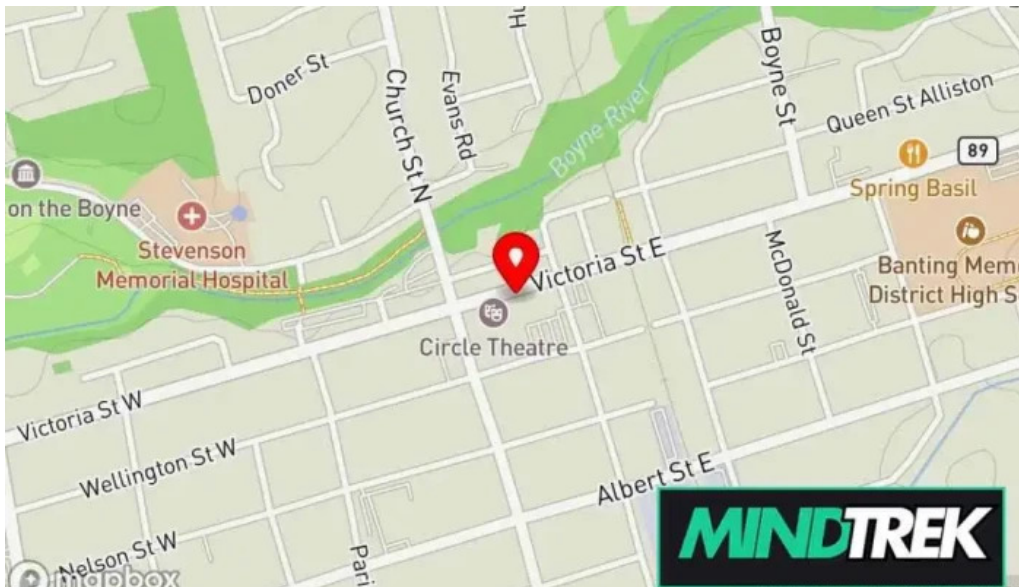
We open at the following schedule:

Day Hours
Monday
9?AM–5?PM
Tuesday
9?AM–5?PM
Wednesday
9?AM–5?PM

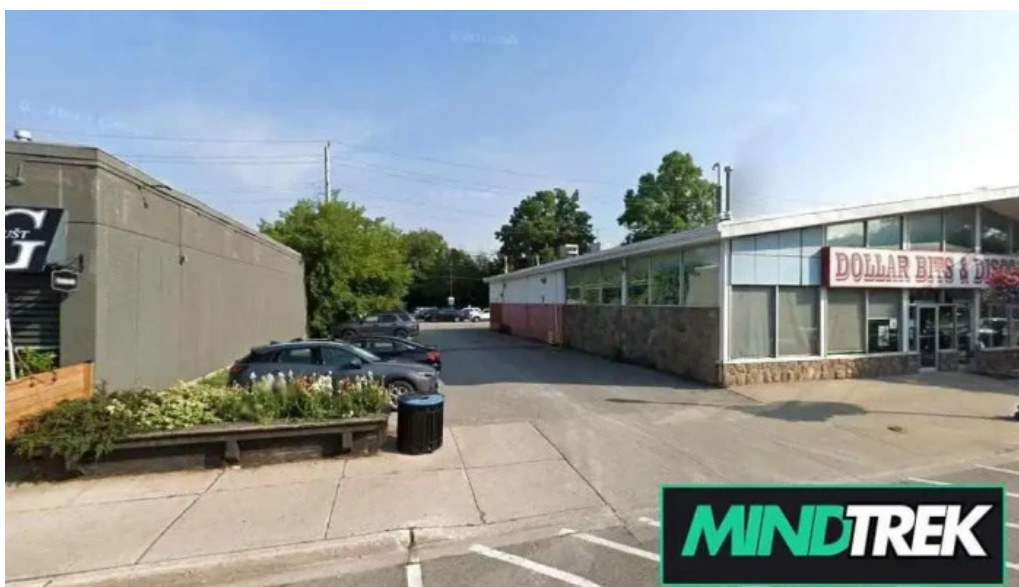
Thursday
9?AM–5?PM
Friday
Closed
Saturday
Closed
Sunday
9?AM–5?PM

If necessary to alter any element that you feel is not correct concerning this page, we urge you to deliver a message so that we will handle it as soon as possible. Thank you in advance thanks for your cooperation.

Images



Simcoe county addiction mental health service map



Simcoe county addiction mental health service alliston



Simcoe county addiction mental health service all

Tags

Accessibility, Wheelchair-accessible car park, Amenities, Wheelchair-accessible entrance, Toilet, Wheelchair-accessible toilet

Related content

- 3.9 *** *Integrate Health Services - Ajax*
- 4.3 *** *Embrace Well Psychological Services - Ajax*
- 4.5 *** *Safe Spaces Therapy - Ajax*
- 3.8 *** *Mills | Gosse Psychology (Ajax Pickering) - Ajax*
- 5.0 *** *Acquah Counseling and Consulting Services - Ajax*
- 2.8 *** *Jeff Packer Msw & Associates Inc. - Oshawa*
- 3.7 *** *MacDonald Psychotherapy - Ajax*
- 5.0 *** *Ask Donna Marie Counseling Services - Ajax*
- 5.0 *** *Centre For Cognitive Behaviour Therapy - Ajax*
- 5.0 *** *Durham Counselling - Ajax*

Categories

child health care centre
chiropractor
community center
community health centre
consultant
counselor
doctor
family counselor
health spa
life coach
marriage or relationship counselor
massage therapist
mental health clinic
mental health service
physical therapist
physical therapy clinic
psychologist
psychologists
psychotherapist
social worker
support group